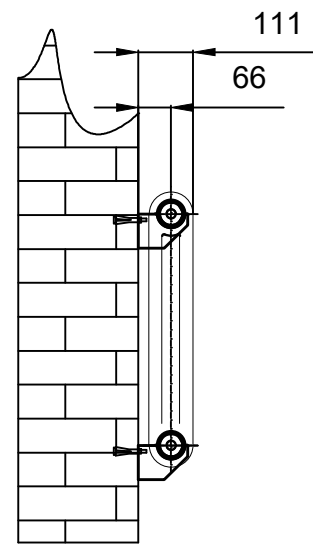
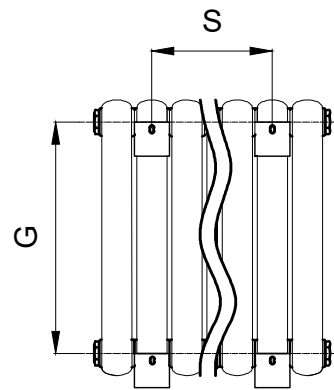


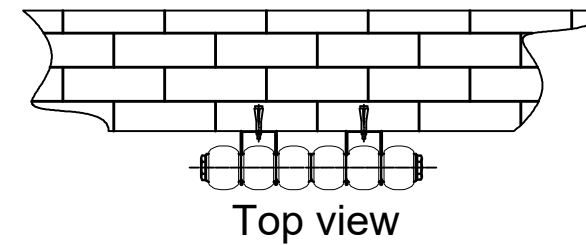
Front View



Side View



Back View



SUPPLIED INSTALLATION ACCESSORIES

- X4
 X8
 X2
- X4
 X1
 X1

- Vertical Mounting
- Optional Coior Selection
- Max Operaional Pressure:6Bar
- Inlet/Outlet:1/2"Female Pipe Thread
- All Dimensions are in mm

| Product Code | Product Name | pipe number | Height | Width | Thickndss | Hanger Axes vertical | Hanger Axes Horizontal | Wall to pipe center distance | Empty Weight | Water volume |
|--------------|-----------------------|-------------|---------|---------|-----------|----------------------|------------------------|------------------------------|--------------|--------------|
| | | | H mm | W mm | D mm | G mm | S mm | C mm | - kg | - l |
| RND-CNV05044 | CONEVA COLUMN550X440 | 6 | 550 | 440 | 90 | 475 | 210 | 66 | 12.9 | 8 |
| RND-CNV05058 | CONEVA COLUMN550X580 | 8 | 550 | 580 | 90 | 475 | 350 | 66 | 16.6 | 10.6 |
| RND-CNV05079 | CONEVA COLUMN550X790 | 11 | 550 | 790 | 90 | 475 | 560 | 66 | 22 | 14.6 |
| RND-CNV05100 | CONEVA COLUMN550X1000 | 14 | 550 | 1000 | 90 | 475 | 630 | 66 | 27.9 | 18.6 |
| RND-CNV05121 | CONEVA COLUMN550X1210 | 17 | 550 | 1210 | 90 | 475 | 840 | 66 | 34.2 | 22.6 |
| RND-CNV05142 | CONEVA COLUMN550X1420 | 20 | 550 | 1420 | 90 | 475 | 910 | 66 | 38.6 | 26.6 |